

OREGON WINE



SYMPOSIUM

February 3 & 4, 2025

Impacted Nutrition: A guide to properly soiling yourself.

Tres Burns – Winemaker & Drew Herman Director of Viticulture

PROGRAM
PRODUCER **oregon**
wine BOARD

TRADE SHOW
PRODUCER



Oregon
Winegrowers
ASSOCIATION EST 1981

Alexana


- Established in 2003
- Dundee Hills
- 22 Soils and 19 aspects
- Organic management
- Native cover crop and grazing intensive.
- Bespoke wines and sense of place 😊



Planning ahead and communicating effectively -winemaker vs winegrower: modern warfare

- Jim Prosser's Phenological farm plan.
- Communication is the key to quality.
- Key Times
 - Bud rubbing
 - Bloom
 - Leaf pulling
 - Crop thinning
 - Harvest

Phenological Farm Plan

Stage	Phenological Phase	2021 Timing	Pest Pressure	Nutrition Needs	Ground Actions	Canopy Actions	Spray Actions
Stage 0: Bud development	 00 01 05	Jan - Feb	-Eutypa, -Armilaria mellea (Honey Fungus) IPM: -Sanitize Shears, Cut on dry days.	-Zinc (ground) if low at veraison SAP *do not apply over 0.25#/acre as seasonal total to avoid toxicity	-Landscape deadhead, mulch, irrigation repair -Graze -Rodent control -bird box maintenance -road maintenance	-Layering replants -Trellis maintenance	
00	Dormant: winter buds pointed or rounded and bud scales closed, depending on cultivar	Feb 18	-Eutypa, -Armilaria mellea (Honey Fungus) IPM: -Sanitize Shears, Cut on dry days.		-Replants -Blackberries Scotch broom Poison Oak -Rodent Control -New landscape installations -Graze	-Pruning & pull brush	
01	Buds beginning to swell		-Eutypa, -Armilaria mellea (Honey Fungus) IPM: -Sanitize Shears, Cut on dry days.		-Flail brush if dry -Rodent control -Buy replacement/feeder livestock.	-Finish cane tie-down	
03	End of bud-swell. Buds swollen but not green.	Mar 27	-Mites -Bore beetles -Phomopsis (Dead arm) -Redblotch Virus IPM: -Sanitize Shears, Cut on dry days.	-Last Chance for ground amendments (MICRO) based on veraison SAP and tissue.	-Cover crop in Problem areas and summer covers -Rodent control -Soil Testing	Wires in position -Begin Second Cuts	
05	"Woolly bud": brown wool visible on bud						
07	Beginning of bud-break, green shoot tips just visible		-Mites -Bore beetles		-Tractor Hoe if conditions permit (Flag exclusions)		Seed under vine c.c.

Bad block or bad approach?

- Poor vine and soil matches do exist, but poor perspective is more common.
- Maybe your secret recipe is the problem?
 - The story of Dundee La Tache
- Block characteristics/plant material may not match style. It's much easier to change your approach than geology.



This old Block: Mixing your own paint

How do you fundamentally change block characteristics without changing farming.

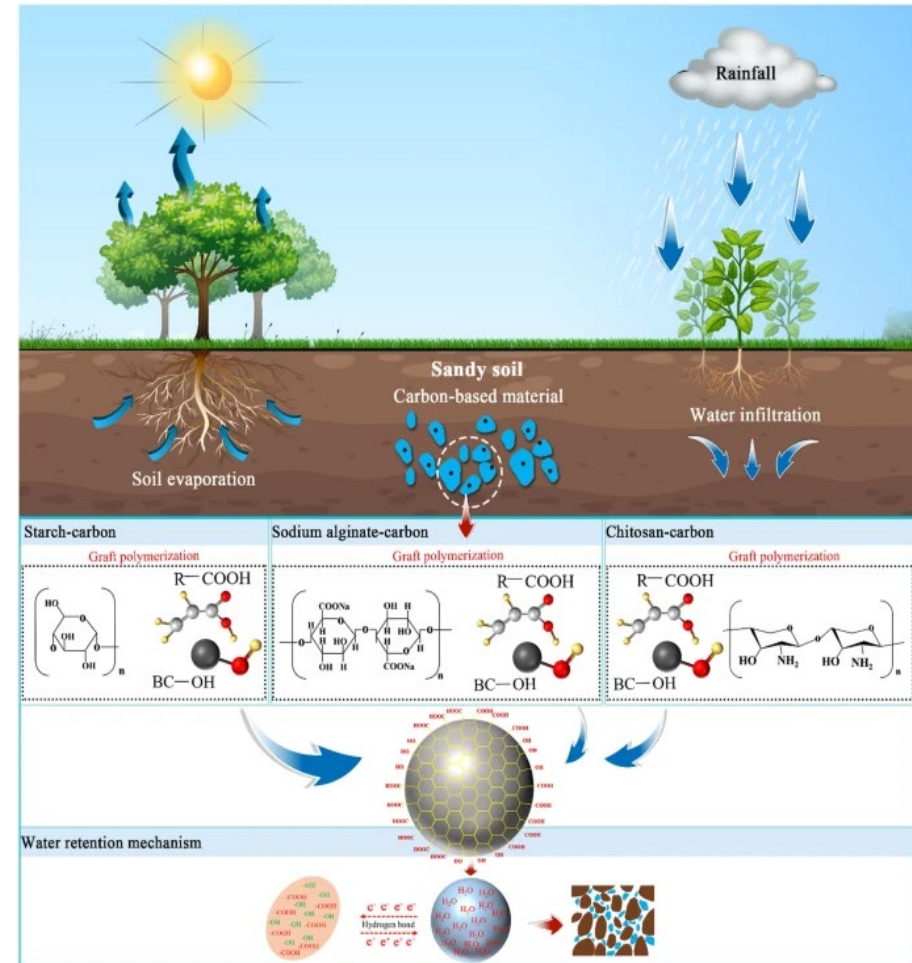
- Maceration Style
- Tank selection
- Winery additions
- Cooperage
- Elevage
- Oxygen management

This old Block: Build your own brush and pallet

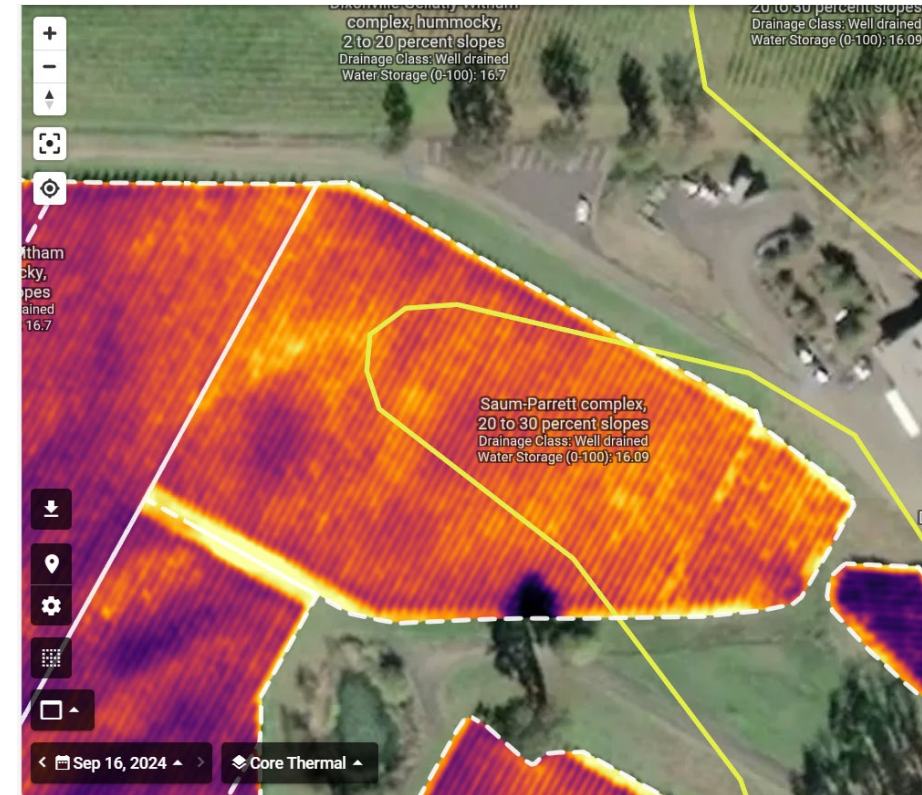
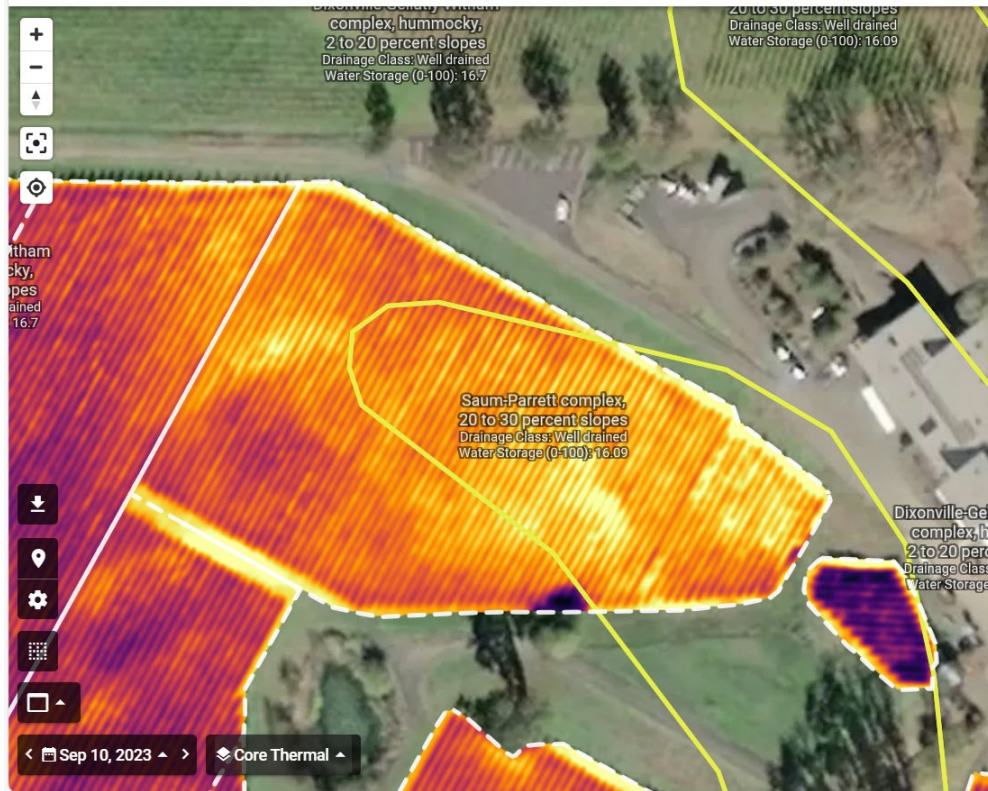
- How do you fundamentally change block characteristics through cultural practices
- Obvious examples
 - Leaf pulling
 - Expose yourself
 - Canopy management
 - Timing is everything
 - Thermal regulation
 - Irrigation, Rain, and Osmotic regulation (K+)
 - Increasing total water holding capacity: become a (SOM)melier
 - Nutrition

Thermo regulation of site

- Plan for rain, don't pray for it.
- Building Climate resilient soils
- Total thermal load and site engineering
 - A case for diverse cover
 - Considerations for effectively
- managing your new vole farm for quality.



No cover vs cover



Nutrition: Is the cupboard bare or are we just out of hotpockets?

- Your soil is not mined out. Trophobiosis vs rootstock
- ENR (Estimated Nitrogen Release) till vs no till.
- Reduce, reuse, recycle: nutrient partitioning and recycling.
- Low motility is not the same as immobile.
 - for the love of grapes, read about rhizophagy.
- Fertilizer is a blunt instrument, there are crappier options (ruminants)
- Carbon is key: 1% SOM = 10,000-25,000 gal/acre water holding capacity.
- CEC, pH, Aluminum and other things carbon helps you forget.

Nutrition Theory

- Deficiency > inhibition of protein synthesis > accumulation of soluble substances > improved nutrition of parasites > rapid multiplication and virulence of bacteria and viruses, etc.
- Micronutrients
 - Mn, Cl, and B are activators of enzymes, while Cu, Fe, Zn, and Mo are components of enzymes
- Nitrate>Nitrite>Ammonia>Amino
- Protein synthesis (enzymes, hormones, structural) and Proteolysis (housekeeping and metabolic control)
- The elusive silver bullet for great YANS and appropriate K+.