

OREGON WINE



PORTLAND

SYMPOSIUM

Viticulture for Winemakers Working with Your Vineyard Manager

PROGRAM
PRODUCER



OREGON
WINE
BOARD

TRADE SHOW
PRODUCER



OREGON
WINEGROWERS
ASSOCIATION

Viticulture for Winemakers

Working with Your Vineyard Manager

We will be looking at three “perspectives”

1. Winery working with a Vineyard Management Company
2. Winery with an in-house Vineyard Management Team
3. Winery with one combined Vineyard/Cellar Team

Logo
here

OREGON WINE



PORTLAND

SYMPOSIUM

Achieving optimal fruit quality for still and sparkling wine

Isabelle Meunier, LAVINEA; Isabelle Meunier Consulting

Alex Cabrera, Results Partners LLC

PROGRAM
PRODUCER



OREGON
WINE
BOARD

TRADE SHOW
PRODUCER



OREGON
WINEGROWERS
ASSOCIATION

Welcome to Anahata Vineyard

Eola-Amity Hills

- The vineyard

- 20 acres. Planted in 2015. 4 clones of PN, 2 clones of CH
- LIVE certified and sustainably farmed since development

- Wine Styles

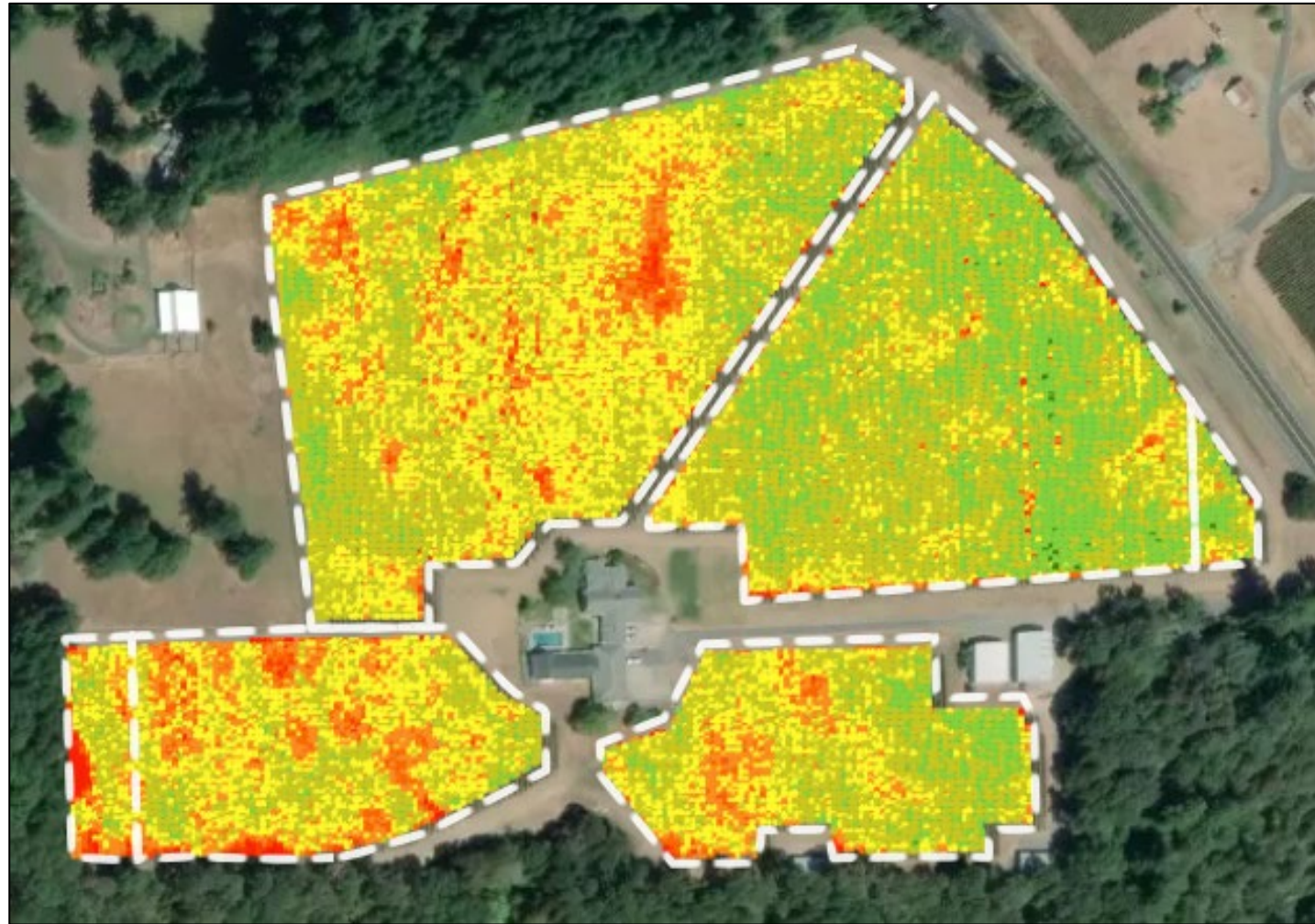
- For Aubaine Wines: aka “Windfall”
Boutique single vineyard estate grown Pinot Noir & Chardonnay project
- For Lytle-Barnett Wines: Traditional Méthode Champenoise in several styles
“French Tradition meets Oregon Authenticity”

- Ownership/Farm manager/Winemaker structure.

- vs Estate model
- Brief history of working together and start of wine projects.

Ongoing Relationships

- Dancing between farming for still or sparkling wine
 - Global overview: yearly planning sessions, upcoming growing season goals
 - Pruning, amendments, crop cover strategies
 - Several check-ins to review
 - adjust based on specific seasonal conditions
- Vigor management



Sept 2022

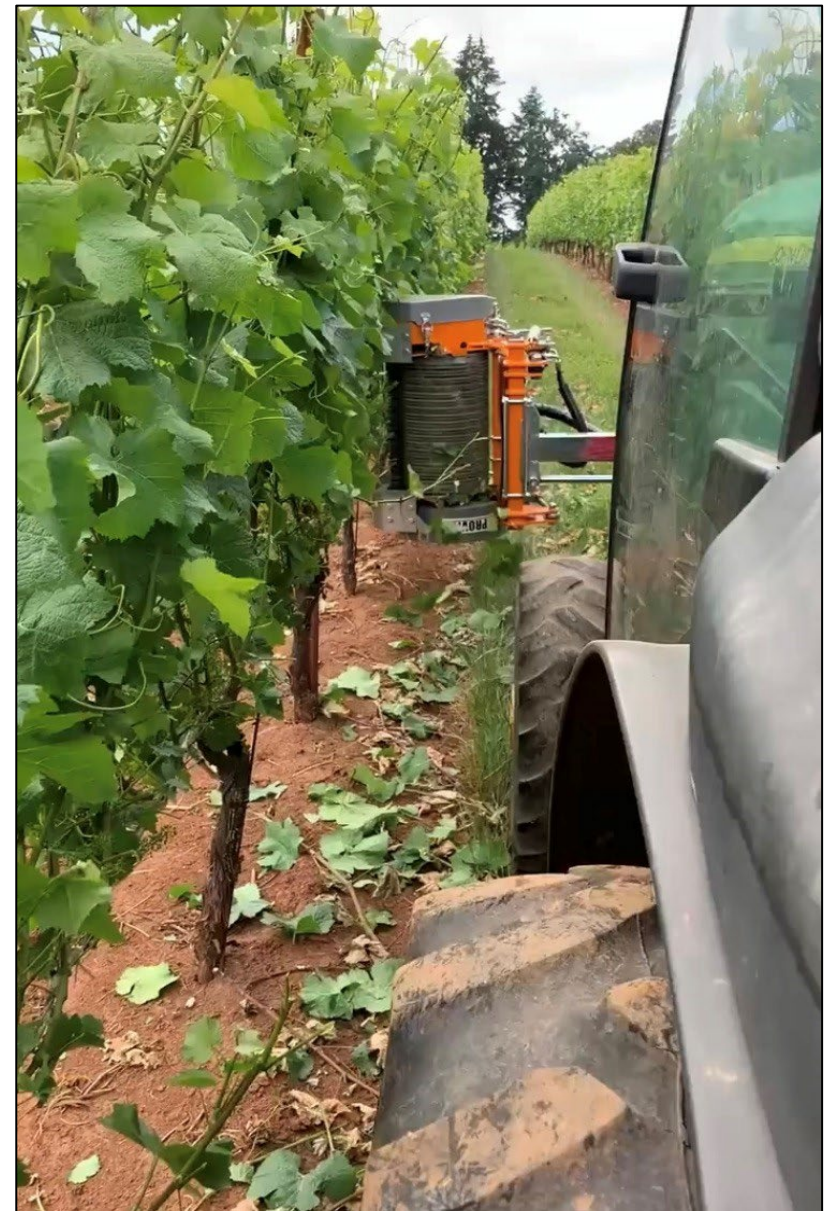
Canopy and Floor Mgmt. Strategies

- Pruning: established as canes, converted to spurs for PN
 - Establish low yields from get go despite overall vigor
 - Can introduce some mechanization
 - Less fruit thinning required during growing season
- Crop Cover Choices
 - Moved from biomass builder to oats to help overall vigor
 - Some areas to full ground cover, some to full cultivation
- VSP vs not so VSP
 - Maintaining airflow is key, within reason...



Fruit Exposure Strategies

- Still versus Sparkling Wines
 - Why
 - Influence the flavor profile of each significantly, disease mitigation.
 - Less vs More
 - Based on vintage conditions and wine style.
 - When
 - Preference on later rather than sooner...risk of heat spikes...
 - How
 - Consensus/compromise/Communication
 - Hand leafing to machine deleafing...
 - “Pre-harvest” exposure...
- Results
 - More linear style and less overall fruit flavor for base wines / sparkling
 - Chardonnay that retain good citrus fruit flavors with nice acid balance
 - Pinot Noirs that dances between red and black fruit flavor with silky textures



Target Yield Strategies

- Still versus sparkling wines
 - Why
 - Sparkling and preserving acidity, versus still and mitigating variation
 - Yields targets
 - based on seasonal conditions and stylistic goals.
 - Wings & 3rds
 - On or off? Depends....
 - When
 - Before véraison
 - Can compensate, less effective
 - During véraison
 - Can hit yield targets best
 - Easier to select for quality (even out crop)
 - After véraison
 - Stragglers, does not truly help ripening
 - Result
 - Quality grapes harvested within correct parameter for stylistic choices is goal.



How?!

Anahata															
Block	Rows	Shoots With Clusters	Cluster Count/Vine	Grams/Cluster	Variety	Clone	Rootstock	Vines/Block	Block Acres	Lag Weight X 1.8 (tons/acre)	1.8 Total Tons	Lag Weight X 2.0 (tons/acre)	2.0 Total Tons	Lag Weight X 2.1 (tons/acre)	2.1 Total Tons
ATJ-01	1-14	18.74	25.83	69.58	Pinot Noir	667	101-14	1477	0.95	5.55	5.27	6.17	5.85	6.47	6.14
ATJ-01	15-24	18.74	25.83	69.58	Pinot Noir	667	101-14	1376	0.88	5.55	4.91	6.17	5.45	6.47	5.72
ATJ-02	1-4	17.63	23.21	72.57	Pinot Noir	777	101-14	525	0.34	5.20	1.75	5.78	1.95	6.07	2.05
ATJ-02	5-25	17.63	23.21	72.57	Pinot Noir	777	101-14	2629	1.69	5.20	8.79	5.78	9.76	6.07	10.25
ATJ-03	All	18.84	26.40	70.50	Pinot Noir	POM	3309	3927	2.52	5.75	14.50	6.38	16.11	6.70	16.92
ATJ-04	1-28	14.53	22.13	67.96	Chardonnay	76	101-14	4060	2.61	4.64	12.12	5.16	13.46	5.42	14.14
ATJ-04	29-32	14.53	22.47	67.96	Chardonnay	76	101-14	590	0.38	4.71	1.79	5.24	1.99	5.50	2.09
ATJ-05	1-5	17.30	26.06	80.21	Pinot Noir	Wad 2A	3309	705	0.45	6.45	2.92	7.17	3.25	7.53	3.41
ATJ-05	6-11	17.30	26.06	80.21	Pinot Noir	Wad 2A	3309	872	0.56	6.45	3.62	7.17	4.02	7.53	4.22
ATJ-06	1-5	16.65	25.27	77.15	Pinot Noir	Wad 1A	3309	693	0.45	6.02	2.68	6.69	2.98	7.02	3.13
ATJ-06	6-12	16.65	25.27	77.15	Pinot Noir	Wad 1A	3309	905	0.58	6.02	3.50	6.69	3.89	7.02	4.08
ATJ-07	1-9	15.33	24.17	73.42	Pinot Noir	777	101-14	1034	0.66	5.48	3.64	6.09	4.05	6.39	4.25
ATJ-07	10-42	15.33	24.17	73.42	Pinot Noir	777	101-14	2019	1.30	5.48	7.11	6.09	7.90	6.39	8.29
ATJ-08	1-59	16.00	25.23	75.34	Pinot Noir	667	3309	3896	2.50	5.87	14.69	6.52	16.32	6.85	17.14
ATJ-08	60-87	16.00	25.23	75.34	Pinot Noir	667	3309	1215	0.78	5.87	4.58	6.52	5.09	6.85	5.35
ATJ-09	1-51	13.82	23.23	63.67	Chardonnay	95	101-14	2507	1.61	4.57	7.36	5.07	8.18	5.33	8.58
ATJ-09	52-79	13.82	24.56	63.67	Chardonnay	95	101-14	1359	0.87	4.83	4.22	5.37	4.69	5.63	4.92
				With Wings					19.14		103.44		114.93		120.68

- The set up...
 - Early decisions on Targets, TPAs. Budgetary consensus...etc
- The Crop Estimate...
 - Spatial allocations –early!
- Initial ground truthing, thinning methodology, and Follow up...

Closing the Loop

- Harvest
 - Post harvest review, sharing of information such as juice panels
- Fruit to Wine
 - Tasting the results of our combined effort is a great way to promote discussions that go beyond the day to day.
- Long Term Collaboration...
 - New development: Windfall Vineyard.
 - 50 acres. 26 blocks. PN, CH, PM
 - Irrigated



THANK YOU!

Logo
here



OREGON WINE



PORTLAND

SYMPOSIUM

Collaboration in Winegrowing

Leti Catoira, Director of Farming, Jackson Family Wines
Erik Kramer, Winemaker, WillaKenzie Estate/Jackson Family Wines

PROGRAM
PRODUCER



OREGON
WINE
BOARD

TRADE SHOW
PRODUCER



OREGON
WINEGROWERS
ASSOCIATION



WILLAKENZIE
ESTATE



COLLABORATION IN WINEGROWING

- Brief history of the WillaKenzie Estate, summary of current site conditions, integration into JFW structure
- Current goals and discussion of some successful collaborative approaches at WillaKenzie Estate
- Questions?



BACKGROUND & HISTORY

- Founded in 1992 in Yamhill-Carlton District by Bernard & Ronni Lacroute
- Acquired by Jackson Family Wines in 2016
- 400-acre contiguous Estate, ~100 acres under vine at time of acquisition
- Portfolio historically focused on terroir specific Pinots, Chardonnay now playing bigger role (redevelopment, new development)
- Very diverse topography, range plant material. Subsequent impacts on growing conditions/vineyard approaches, wine expression, etc.





WILLAKENZIE ESTATE

YAMHILL-CARLTON AVA

*Triple Black
Flores*

Emery

Clairière

Aliette

Terres Basses

Kiana

WINERY AND
TASTING ROOM

Redevelopment

TOTAL PLANTED - 126.1 ac
MIN. ELEVATION: 302' | MAX. ELEVATION: 734'

CHARDONNAY - 5.7 ac	PINOT GRIS - 15.13 ac
GAMAY NOIR - 3.21 ac	PINOT MEUNIER - 3.59 ac
PINOT BLANC - 2.36 ac	PINOT NOIR - 96.11 ac

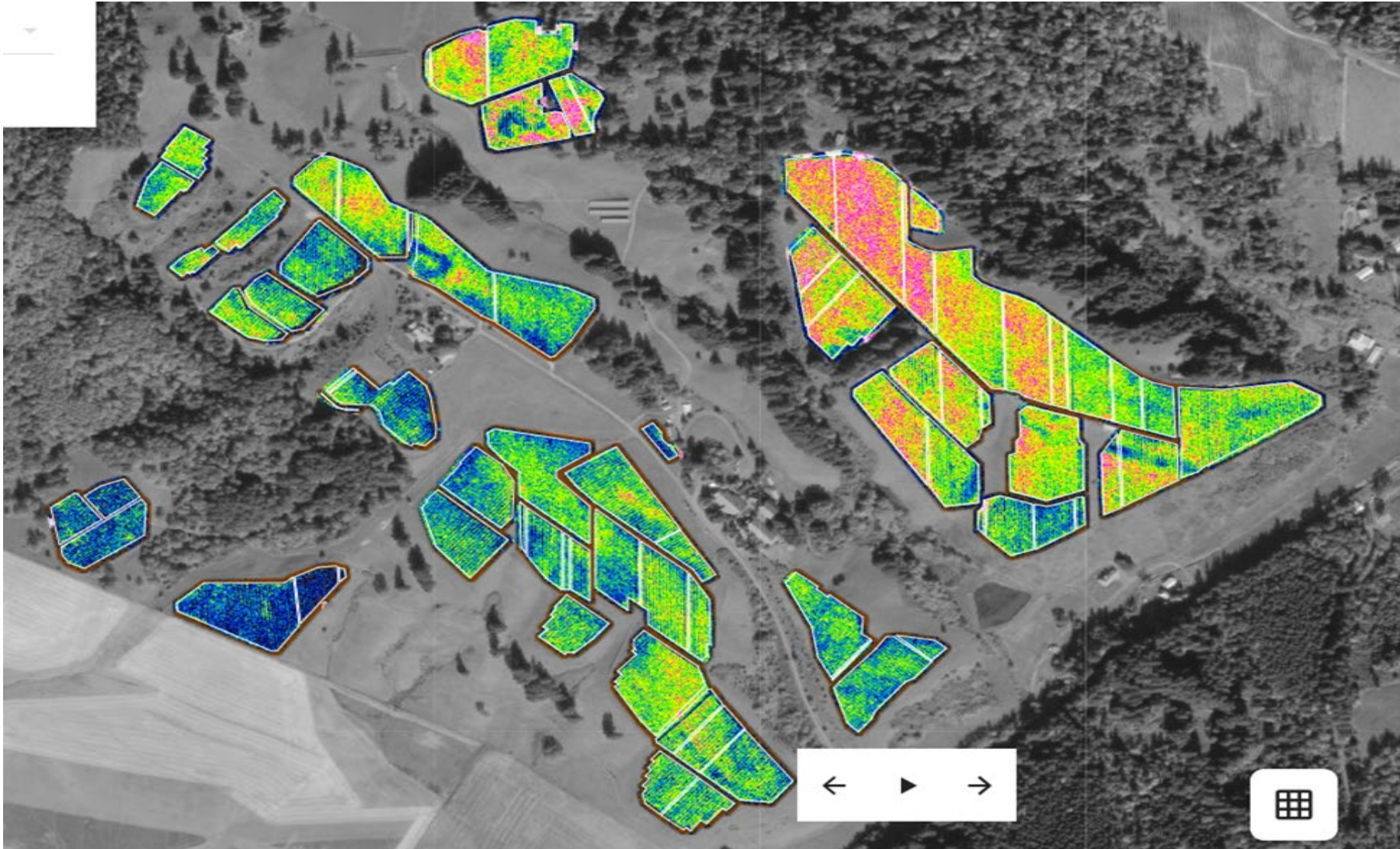
EXAMPLES OF COLLABORATION

- **We Share a Common Goal:** *To Continually Increase Quality*
- **Maintain an Open Mind**
 - Identify opportunities, redevelopment (business need, vine health/age)
 - Differential approaches, understanding priorities
- **Vineyard Team Provides Feedback to Winery**
 - Disease pressure
 - Canopy management, Target Yields, Vine balance
 - Cover crops
 - Stress/Irrigation
- **Winery Team Provides Feedback to Vineyard**
 - Block priorities/roles in wine portfolio (intended yields, canopy mgt)
 - YAN, Potassium, pH
 - Observations about Tannin and Acidity
 - Tastings focused on block quality assessment, potential, etc.

We aim for the same thing and maintain open lines of communication throughout the winegrowing process



DIFFERENCES IN VINE VIGOR



- Blue = low vigor
- Pink = high vigor
- Vigor differences seen in canopy and expressed in wine
- Managed via irrigation, nutrient applications, differential approaches, etc.

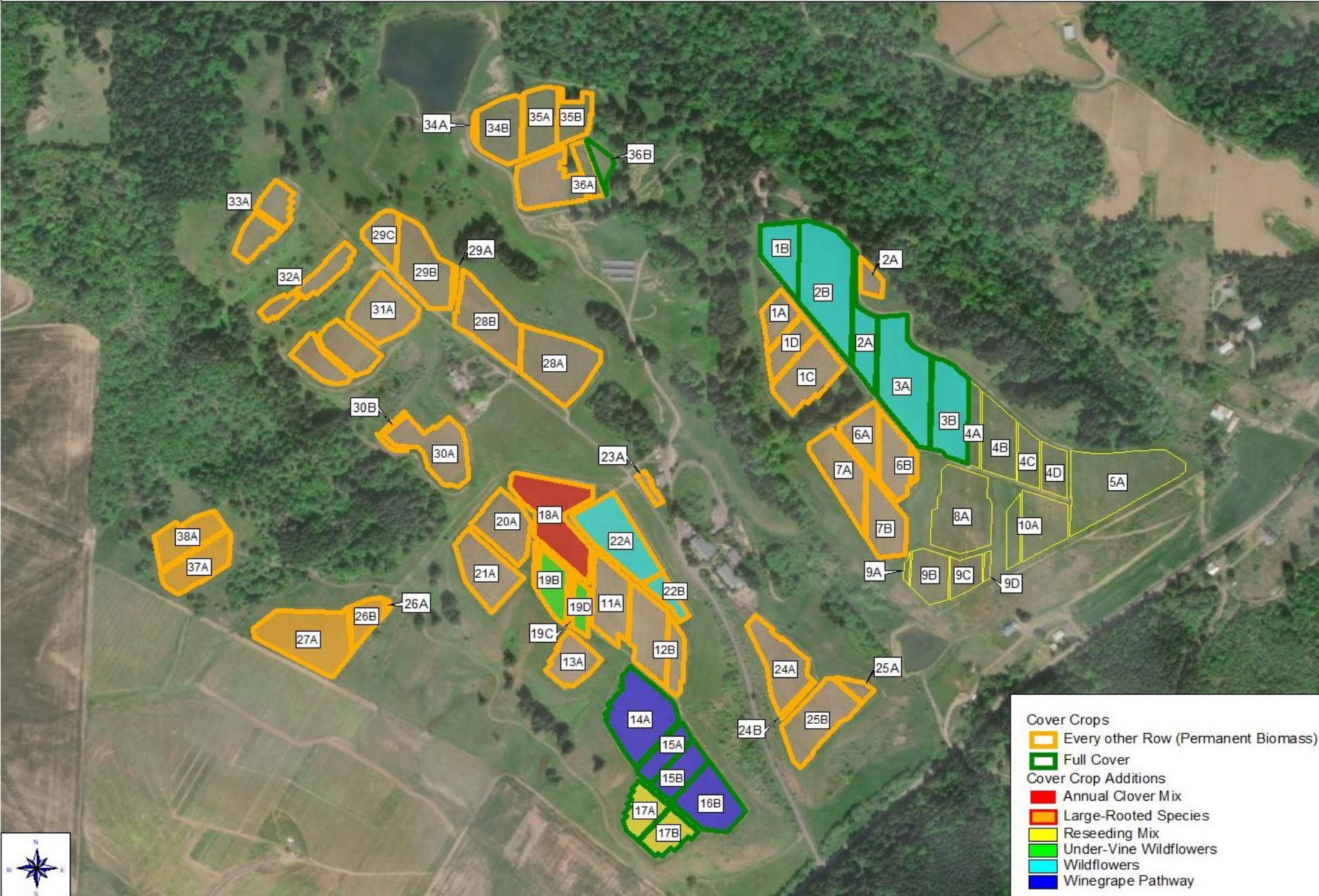
EXAMPLES OF COLLABORATION

- **We Share a Common Goal:** *To Continually Increase Quality*
- **Maintain an Open Mind**
 - Identify opportunities, redevelopment (business need, vine health/age)
 - Differential approaches, understanding priorities
- **Vineyard Team Provides Feedback to Winery**
 - Disease pressure
 - Canopy management, Target Yields, Vine balance
 - Cover crops
 - Stress/Irrigation
- **Winery Team Provides Feedback to Vineyard**
 - Block priorities/roles in wine portfolio (intended yields, canopy mgt)
 - YAN, Potassium, pH
 - Observations about Tannin and Acidity
 - Tastings focused on block quality assessment, potential, etc.

We aim for the same thing and maintain open lines of communication throughout the winegrowing process



WillaKenzie Estate Vineyards - Cover Crops



Cover Crop strategies to improve Soil Health, Biodiversity and Vine Vigor

- Cover Crops**
- ▭ Every other Row (Permanent Biomass)
 - ▭ Full Cover
- Cover Crop Additions**
- ▭ Annual Clover Mix
 - ▭ Large-Rooted Species
 - ▭ Reseeding Mix
 - ▭ Under-Vine Wildflowers
 - ▭ Wildflowers
 - ▭ Winegrape Pathway

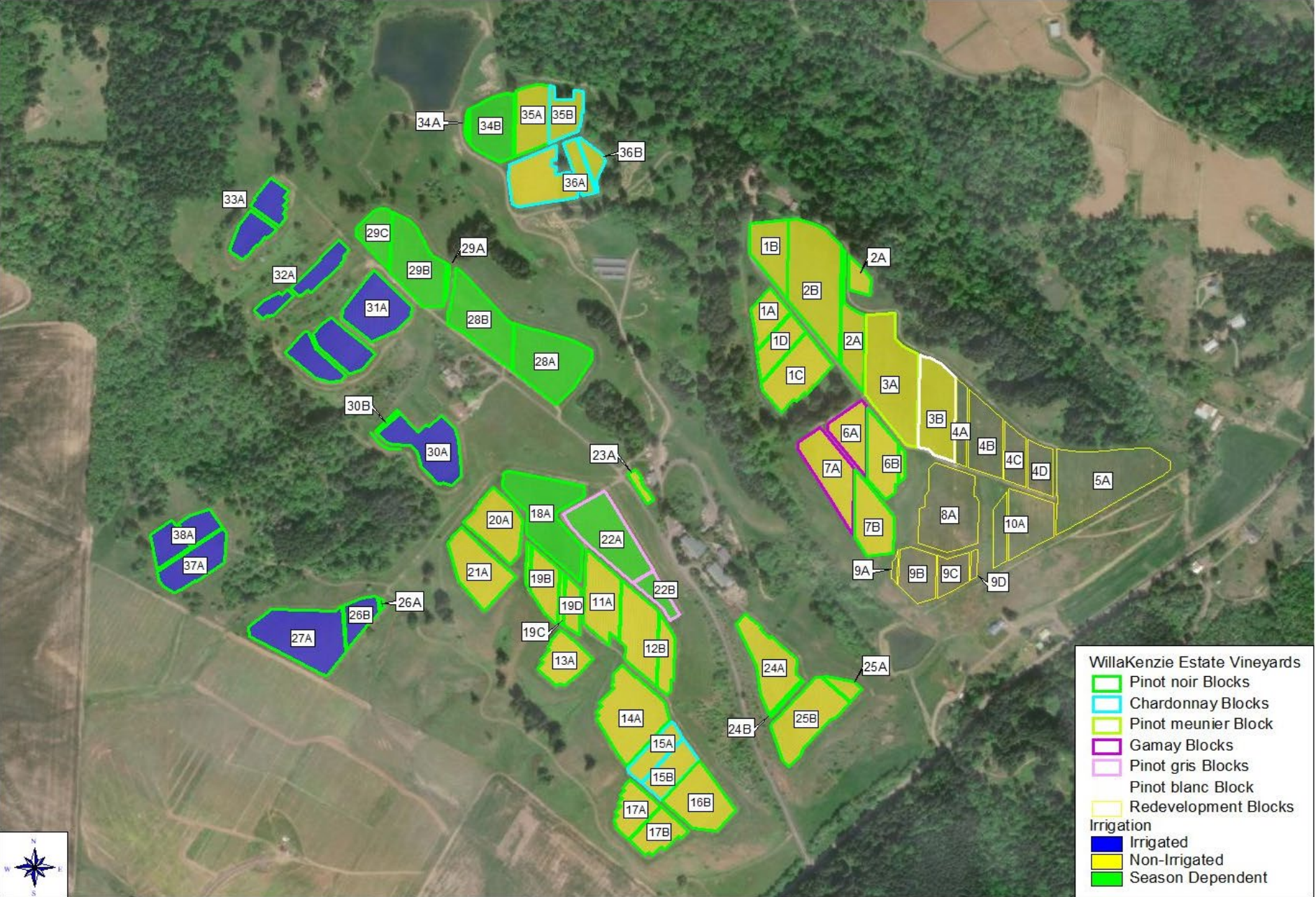
EXAMPLES OF COLLABORATION

- **We Share a Common Goal:** *To Continually Increase Quality*
- **Maintain an Open Mind**
 - Identify opportunities, redevelopment (business need, vine health/age)
 - Differential approaches, understanding priorities
- **Vineyard Team Provides Feedback to Winery**
 - Disease pressure
 - Canopy management, Target Yields, Vine balance
 - Cover crops
 - Stress/Irrigation
- **Winery Team Provides Feedback to Vineyard**
 - Block priorities/roles in wine portfolio (intended yields, canopy mgt)
 - YAN, Potassium, pH
 - Observations about Tannin and Acidity
 - Tastings focused on block quality assessment, potential, etc.

We aim for the same thing and maintain open lines of communication throughout the winegrowing process



WillaKenzie Estate Vineyards - Irrigation Practices



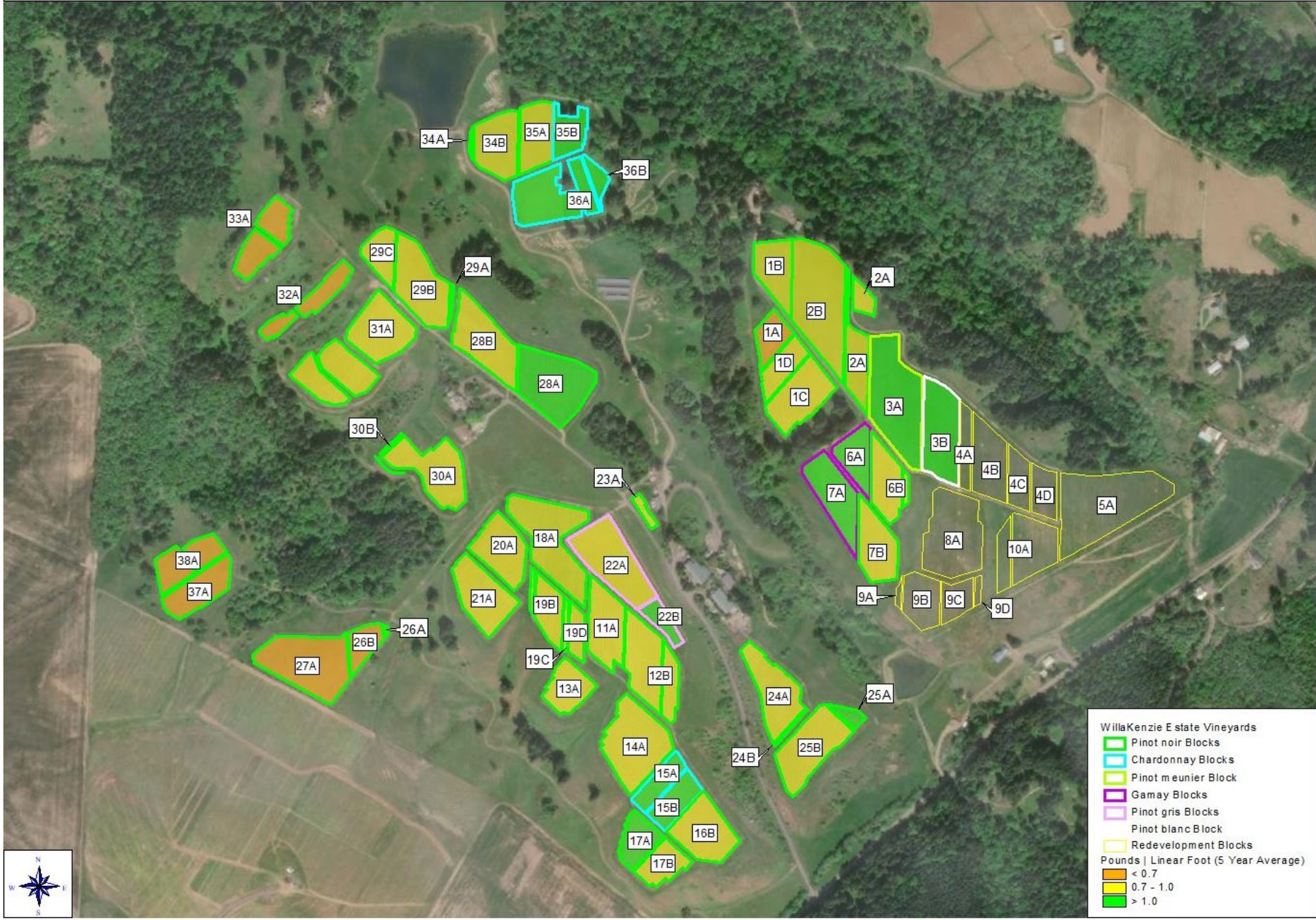
Irrigation practices as a tool to manage Water Stress

Examples of Collaboration at WillaKenzie Estate

- **We Share a Common Goal: To Continually Increase Quality**
- **Maintain an Open Mind**
 - Identify opportunities, redevelopment (business need, vine health/age)
 - Differential approaches, understanding priorities
- **Vineyard Team Provides Feedback to Winery**
 - Disease pressure
 - Canopy management, Target Yields, Vine balance
 - Cover crops
 - Stress/Irrigation
- **Winery Team Provides Feedback to Vineyard**
 - Block priorities/roles in wine portfolio (intended yields, canopy mgt)
 - YAN, Potassium, pH
 - Observations about Tannin and Acidity
 - Tastings focused on block quality assessment, potential, etc.

We aim for the same thing and maintain open lines of communication throughout the winegrowing process

WillaKenzie Estate Vineyards - Pounds | Linear Foot (5 Year Average)



Intended Yields for each parcel. Different varieties, clones, rootstock, vine density, wine roles

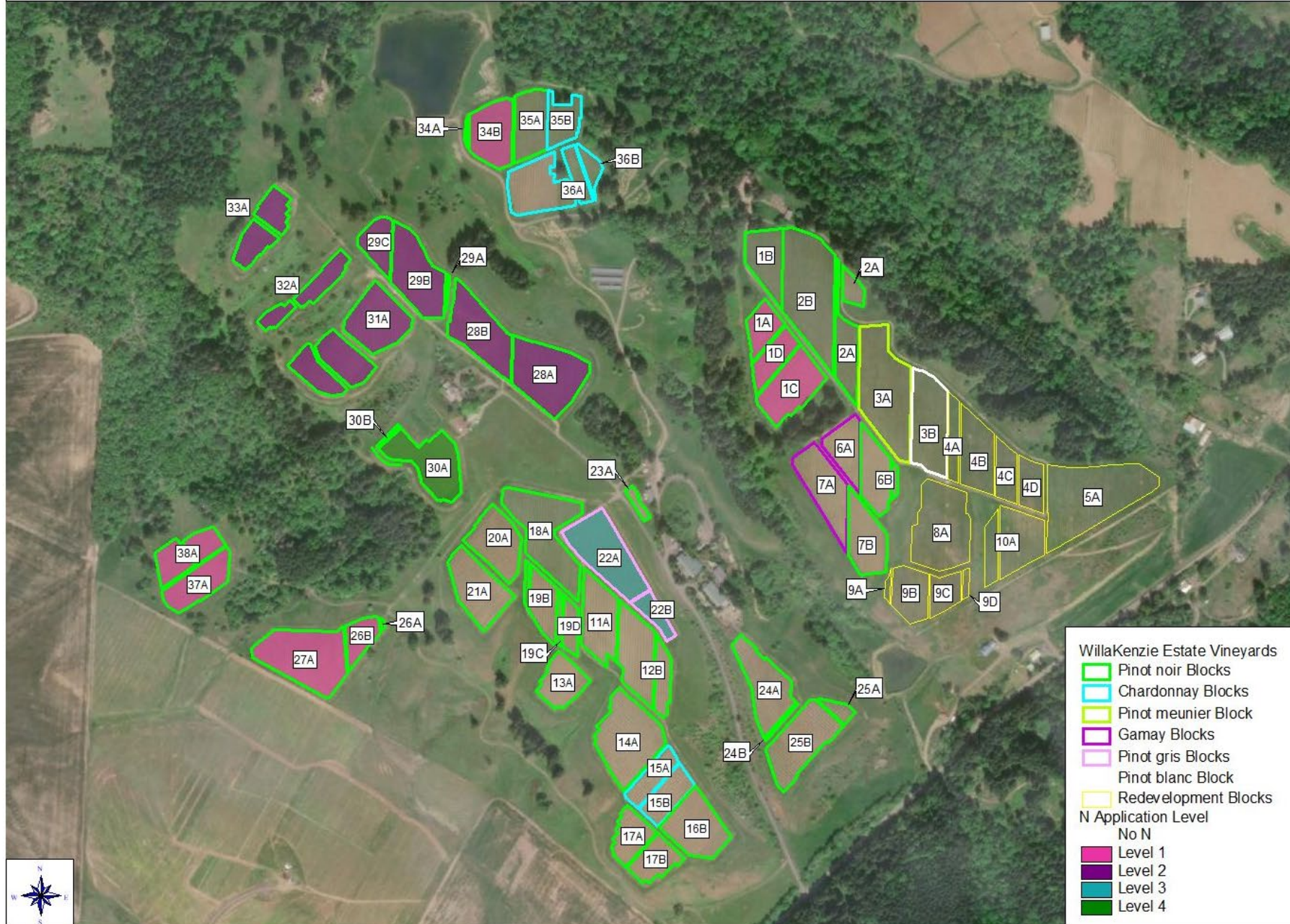
Examples of Collaboration at WillaKenzie Estate

- **We Share a Common Goal:** *To Continually Increase Quality*
- **Maintain an Open Mind**
 - Identify opportunities, redevelopment (business need, vine health/age)
 - Differential approaches, understanding priorities
- **Vineyard Team Provides Feedback to Winery**
 - Disease pressure
 - Canopy management, Target Yields, Vine balance
 - Cover crops
 - Stress/Irrigation
- **Winery Team Provides Feedback to Vineyard**
 - Block priorities/roles in wine portfolio (intended yields, canopy mgt)
 - YAN, Potassium, pH
 - Observations about Tannin and Acidity
 - Tastings focused on block quality assessment, potential, etc.

We aim for the same thing and maintain open lines of communication throughout the winegrowing process



WillaKenzie Estate Vineyards - Nitrogen Application Levels



Nutrient management approach: vine vigor, yields, tissue analysis, YANs, observations during fermentation, wine tasting, etc.

Examples of Collaboration at WillaKenzie Estate

- **We Share a Common Goal: *To Continually Increase Quality***
- ***Maintain an Open Mind***
 - Identify opportunities, redevelopment (business need, vine health/age)
 - Differential approaches, understanding priorities
- ***Vineyard Team Provides Feedback to Winery***
 - Disease pressure
 - Canopy management, Target Yields, Vine balance
 - Cover crops
 - Stress/Irrigation
- ***Winery Team Provides Feedback to Vineyard***
 - Block priorities/roles in wine portfolio (intended yields, canopy mgt)
 - YAN, Potassium, pH
 - Observations about Tannin and Acidity
 - Tastings focused on block quality assessment, potential, etc.

We aim for the same thing and maintain open lines of communication throughout the winegrowing process



Questions?



Jackson
FAMILY WINES

W | K
≡ | ≡
WILLAKENZIE
ESTATE

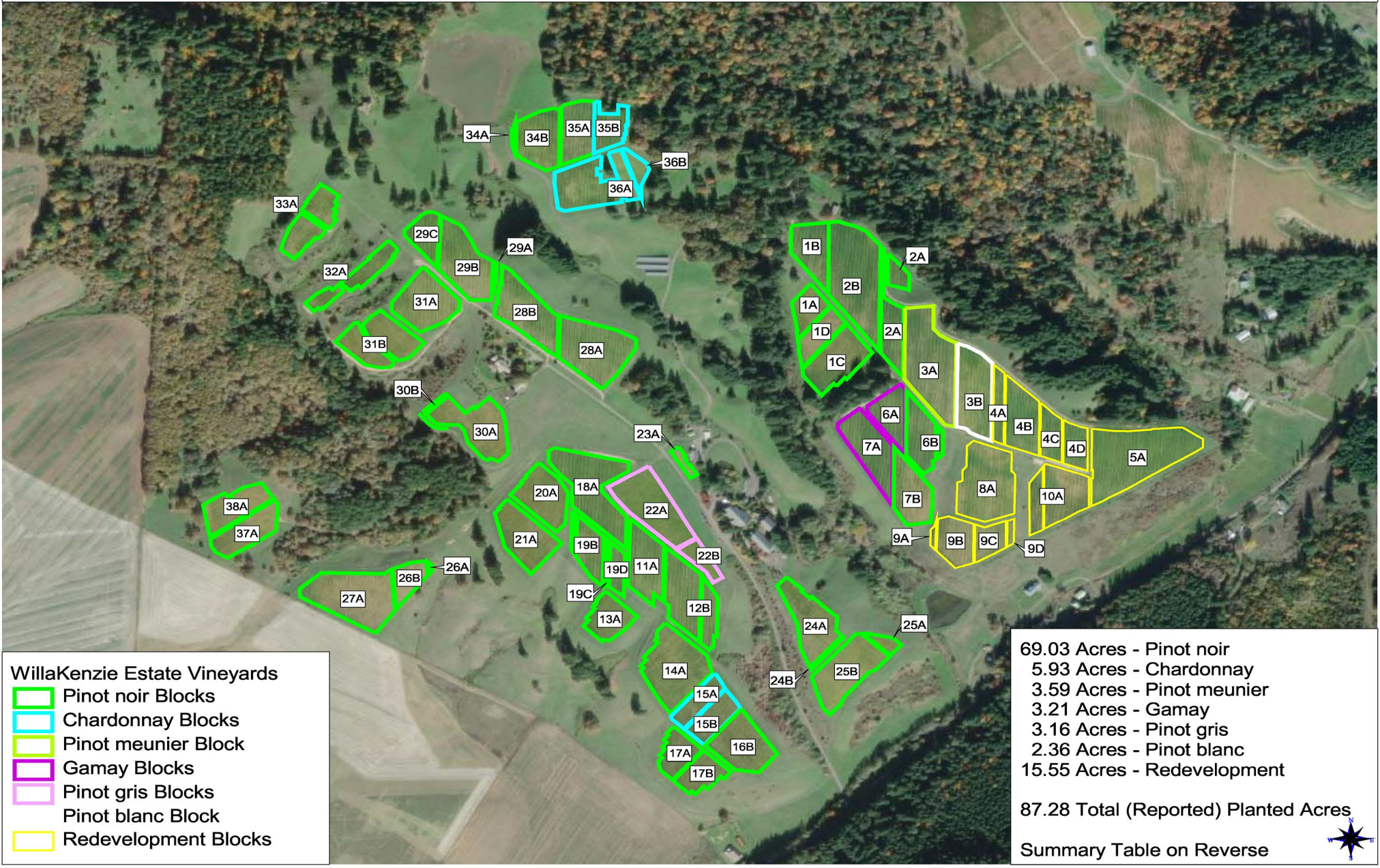
 OREGON WINE
SYMPOSIUM
PORTLAND



THANK YOU!



WillaKenzie Estate Vineyards (Oregon)



OREGON WINE



PORTLAND

SYMPOSIUM

Who's in charge here?

Drew Herman

JK Carriere Vineyard Manager

PROGRAM
PRODUCER



OREGON
WINE
BOARD

TRADE SHOW
PRODUCER



OREGON
WINEGROWERS
ASSOCIATION

JK Carriere - St. Dolores Estate

- JK Carriere founded in 1999 by Jim Prosser
- Started the winery / vineyard build in 2007-2008
- Roughly 23 vine acres planted to:
 - Pinot Noir - Pommard, Wadenswil, Dijon 667 & 777
 - Chardonnay - Mt Eden, Robert Young, Dijon 76 & 96
- Defining characteristics of the vineyard:
 - 749 ft elevation at the top
 - Soils: Jory, Saum, and Nekia
 - Dry farmed, no-till, and organic
 - Bio-intensive



How we decide what to manage ourselves

- Complexity or size
- Seasonality
- Timing vs labor availability
- Management by exception
- Experimentation (play)
- The Microbiome



Hybrid management

- What we manage ourselves
 - Tilt and Vine Health
 - Pruning
 - Equipment
 - Harvest
 - Analysis
 - crop and vigor estimates
 - sap, soil, and population
 - Waste
- When we bring in partners
 - Canopy Management
 - Pruning
 - Grazing - new
 - Harvest
 - Analysis
 - Spore - new
 - NVDI - new

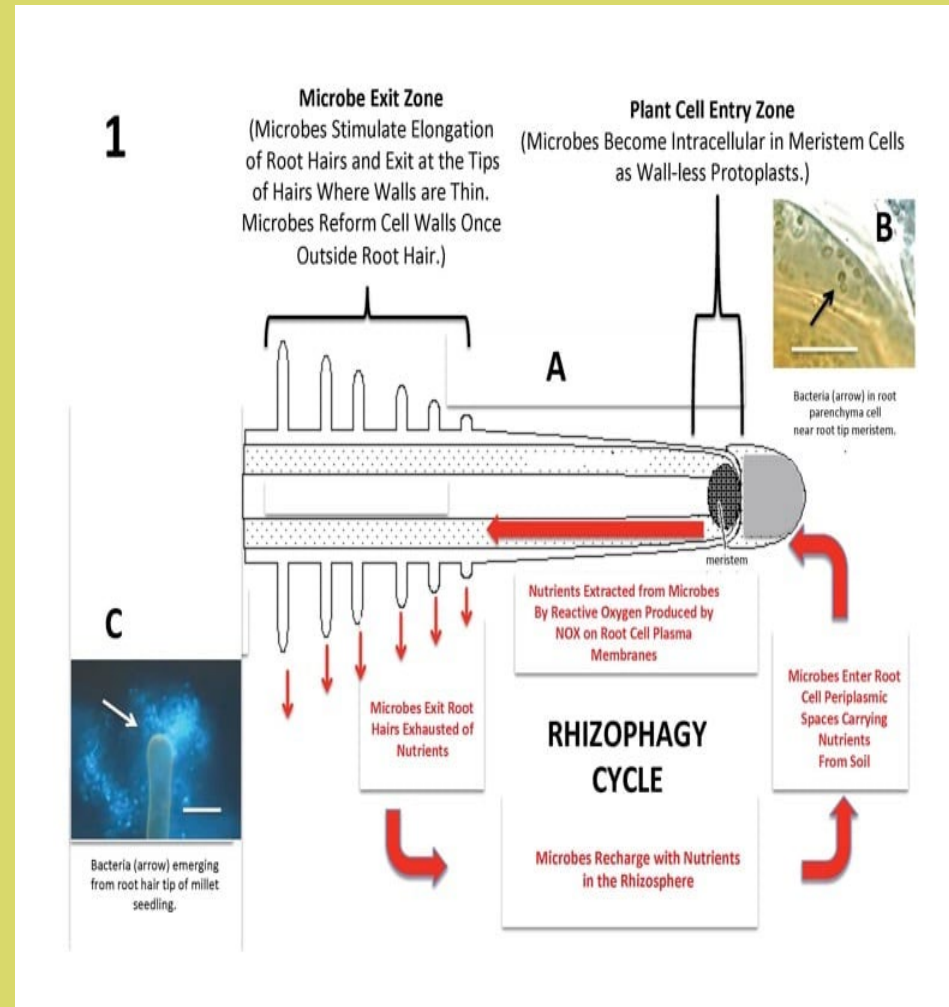
The other vineyard managers – THE VINES

Plants manage their environment

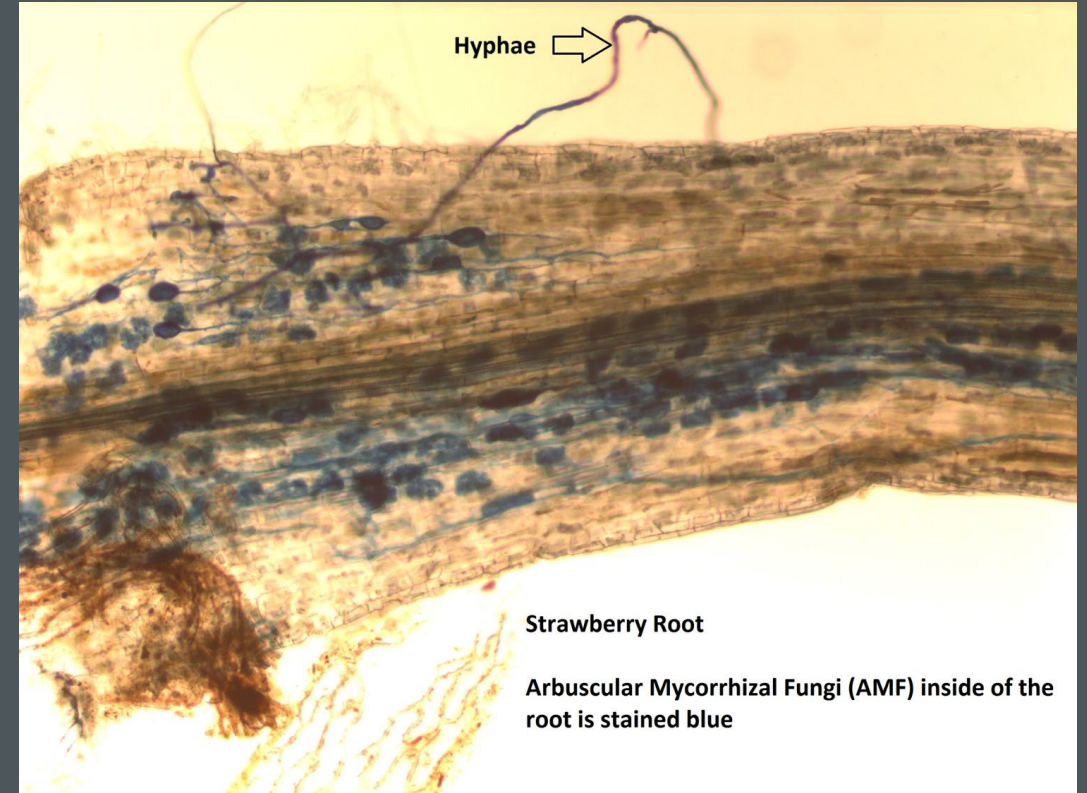
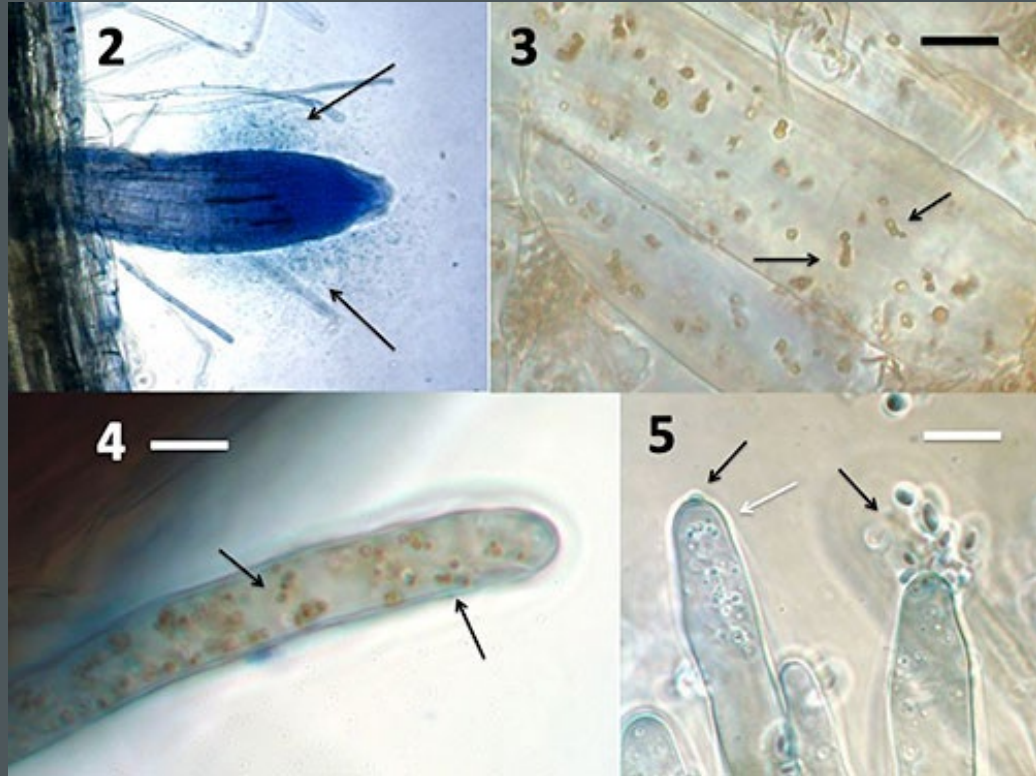
Lessons from a fallowed field

- Increased water retention
- Increased nutrients
- Better structure
- More microbes
- Less disease

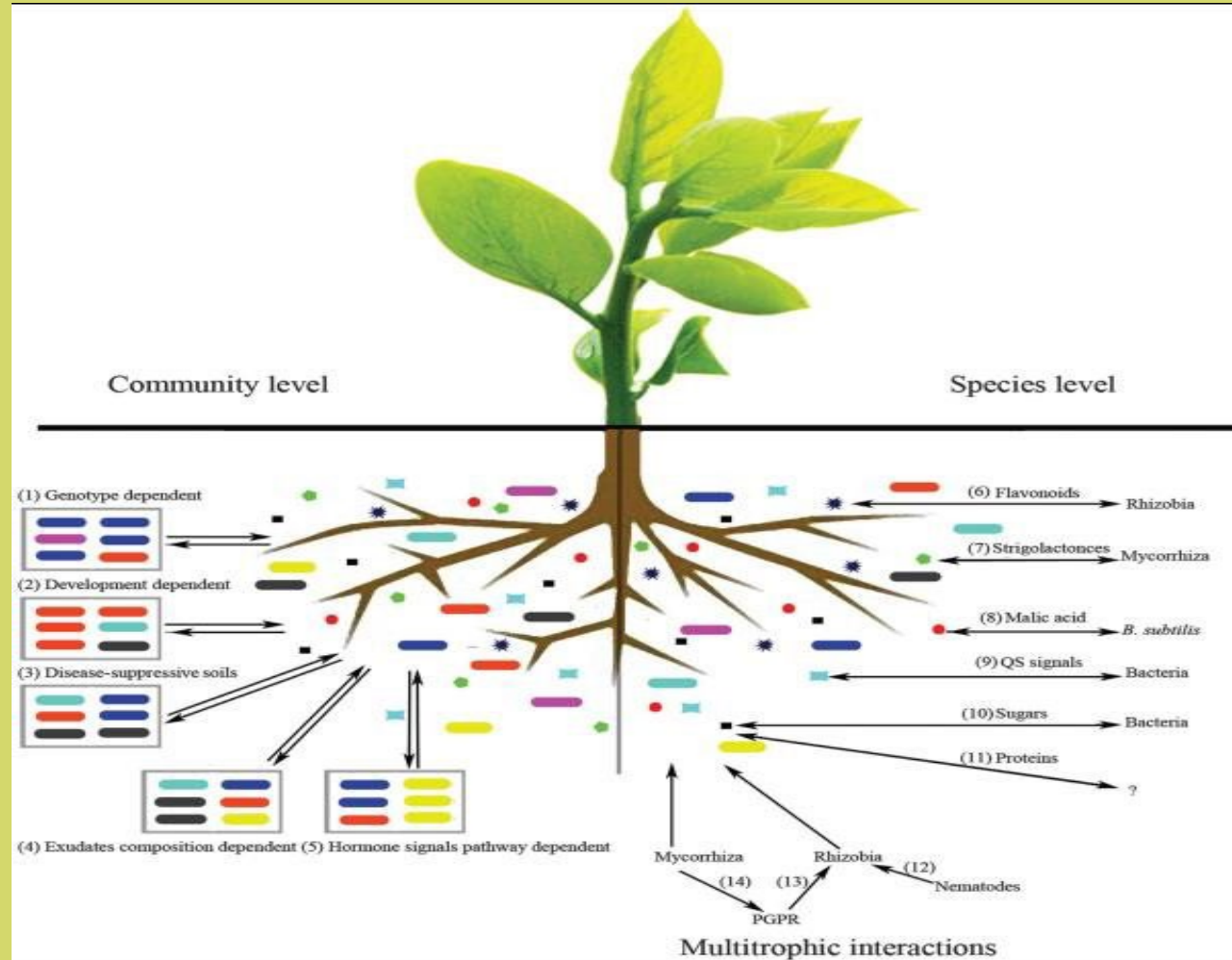
Image Courtesy of Dr. James White-Rutgers University



Rhizophagy and Mycorrhizal relationships



Exudate management



Biologicals/Compost

- Spraying vs spreading
- You can select your organisms just like in the winery.
 - Natty bro
 - Risk averse?
 - Tainio, Aviv, Howler, BioTam
- Creating the right compost
- Advancements in tea production



Citations

- Exudate image- Root exudates a key factor for soil and plant: An overview
SS More, SE Shinde and MC Kasture
- Rhizophagy slides-Dr. James White, Rutgers University
- AM Fungi pictures-North Carolina St university
- Compost Tea: Principles and Prospects For Plant Disease Control – S
Scheuerell and WF Mahaffee
- Fallow Effects on Soil- DC Nielson, FJ Calderon, University of Nebraska